

ROUTE DE MEYRIN - route du Mandement

FICHE N° 05








06.07.2017 - Visa DGT :

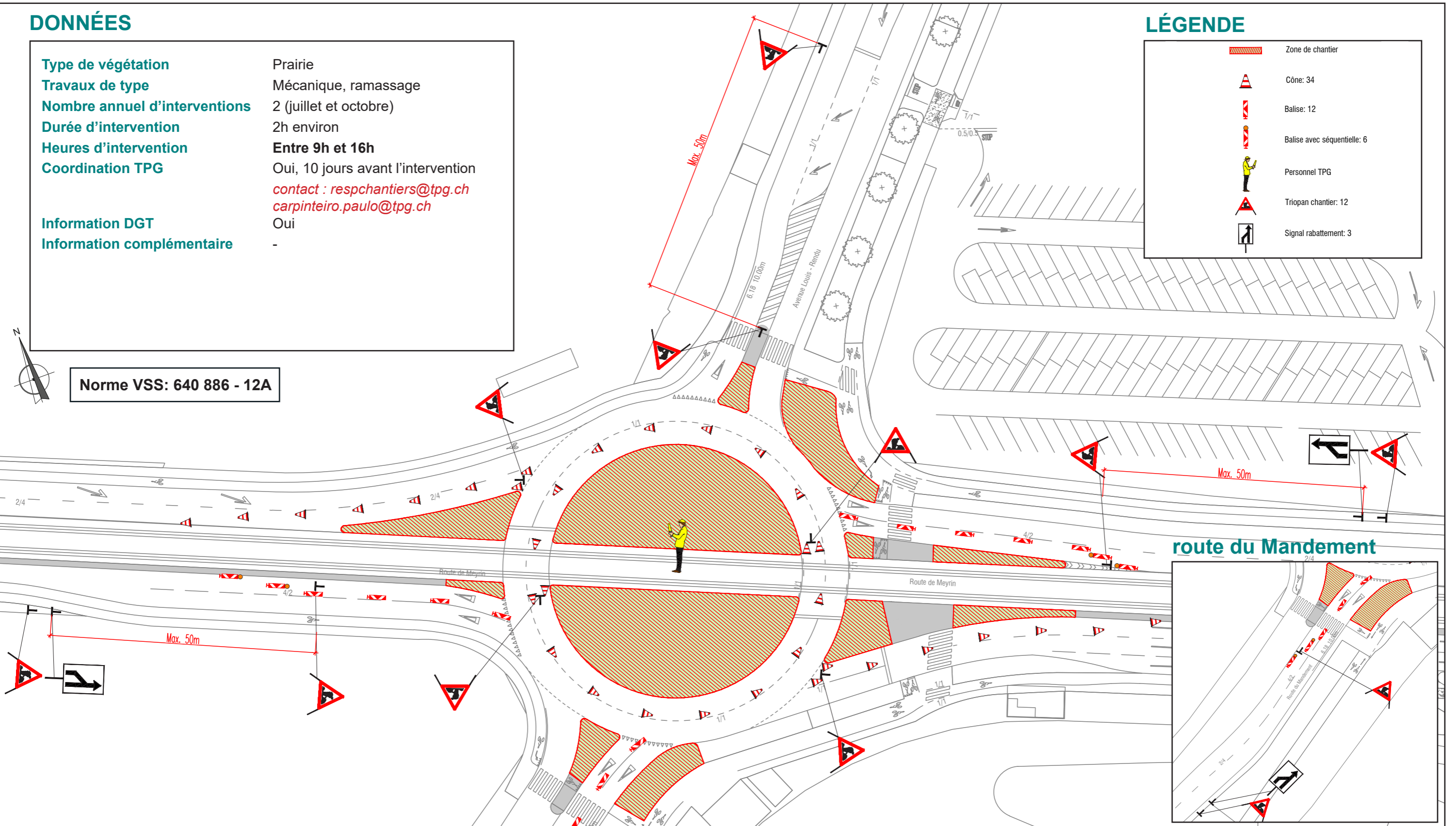
PLAN DE SITUATION

DONNÉES

| | |
|-------------------------------|--|
| Type de végétation | Prairie |
| Travaux de type | Mécanique, ramassage |
| Nombre annuel d'interventions | 2 (juillet et octobre) |
| Durée d'intervention | 2h environ |
| Heures d'intervention | Entre 9h et 16h |
| Coordination TPG | Oui, 10 jours avant l'intervention <i>contact : respchantiers@tpg.ch carpinteiro.paulo@tpg.ch</i> |
| Information DGT | Oui |
| Information complémentaire | - |

LÉGENDE

-  Zone de chantier
-  Cône: 34
-  Balise: 12
-  Balise avec séquentielle: 6
-  Personnel TPG
-  Triopan chantier: 12
-  Signal rabatement: 3



Norme VSS: 640 886 - 12A